

LogTag Software Configuration Guide

*Automatically export your Digital Data Logger
files in 5 simple steps*

BEFORE YOU START

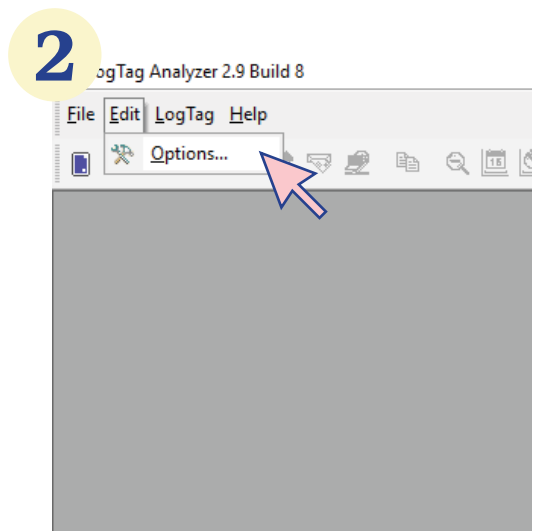
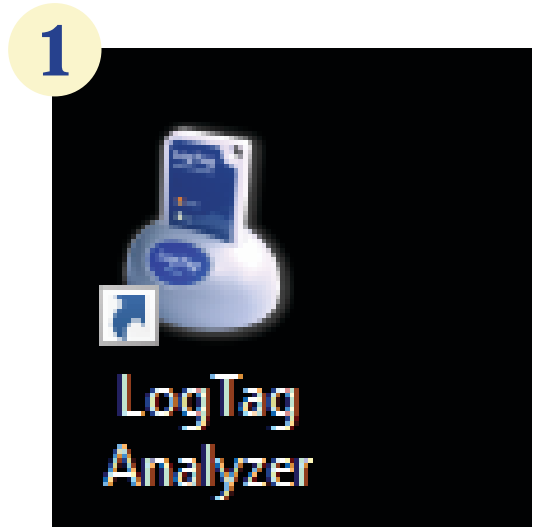
Before you connect the VFC 400-1 Digital Data Logger, or DDL, to a computer for the first time, you need to set-up the LogTag software settings.

This guide will help you set up the LogTag software to re-configure the DDL in five easy steps.

Re-configuration is the process of downloading and exporting the DDL files onto your computer. After you follow the steps in this guide, the LogTag software installed on your PC will handle this automatically. You'll be able to instantly download your DDL's data and find it easily on your desktop. From there you can send it to our Temp Check team!

Step One *LogTag Options Window*

1. Open your copy of the LogTag Analyzer software. The computer icon looks like a DDL inserted into a cradle.
2. Click on **Edit** at the top of the screen then click on **Options**.

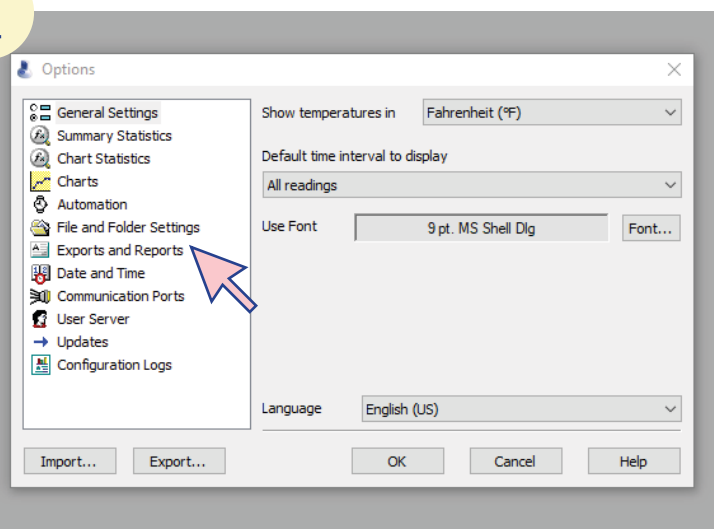


Step Two Automating the Export Process

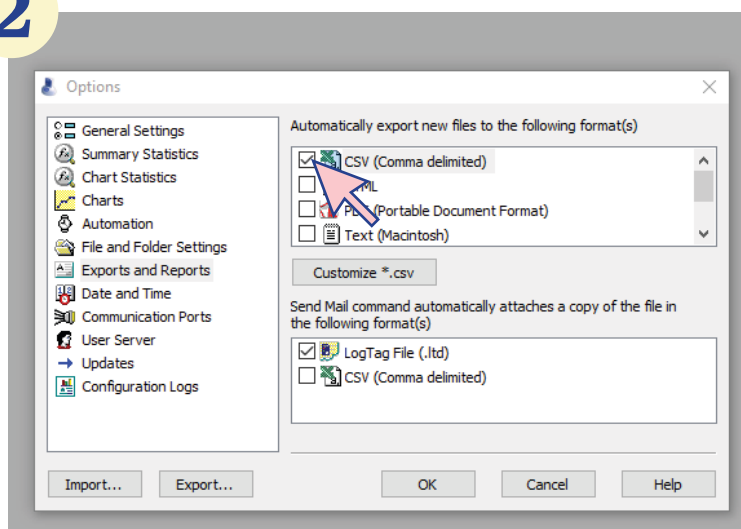
.CSV

1. Within the options window, click on the **Export and Reports** in the left side menu.
2. On the right side menu, under **Automatically export new files to the following format(s)**, check the box next to the **CSV (Comma delimited)** option.

1



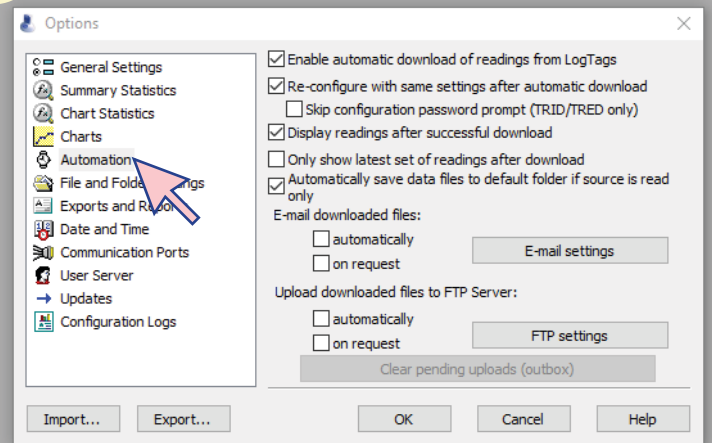
2



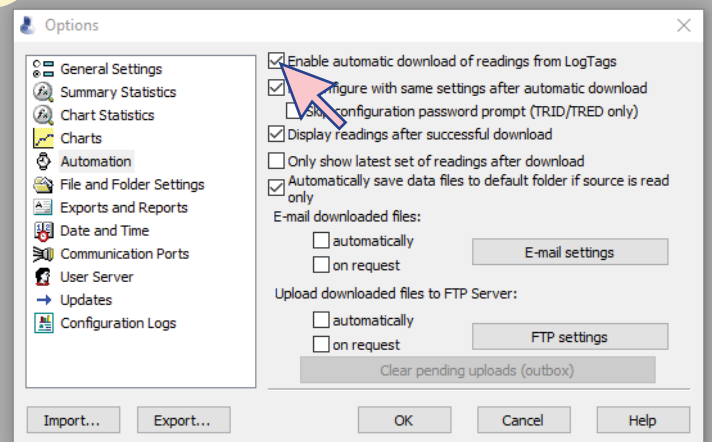
Step Three Automation Options

1. Within the options window, click on the **Automation** in the left side menu.
2. Check the box next to the first item on right side menu, **Enable automatic download of reading from LogTags**.

1



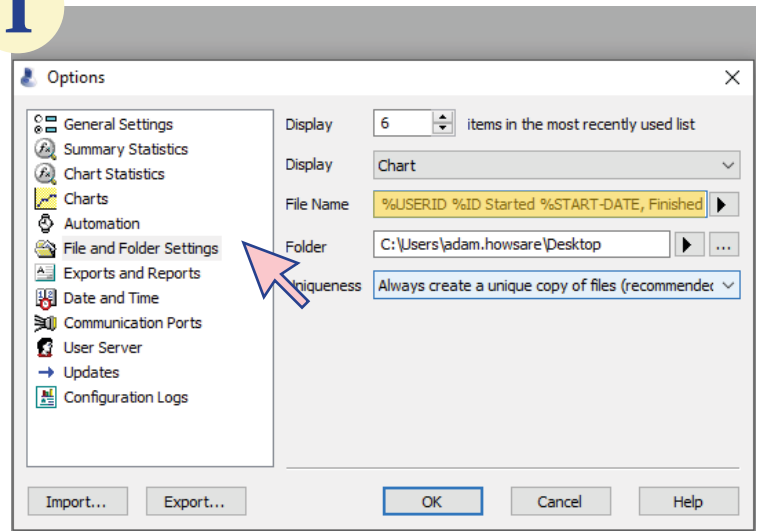
2



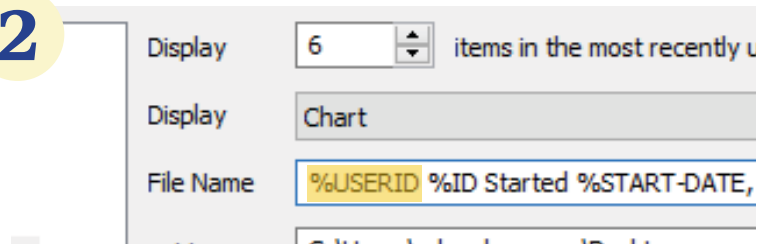
Step Four Save As...

1. Next, select **File and Folder Setting** in the left side menu.
2. Verify that **%USERID** appears in the **File Name** field on the right-hand side.
3. If not, click on the arrow to the right of the **File Name** field and select **User ID** from the list of options.

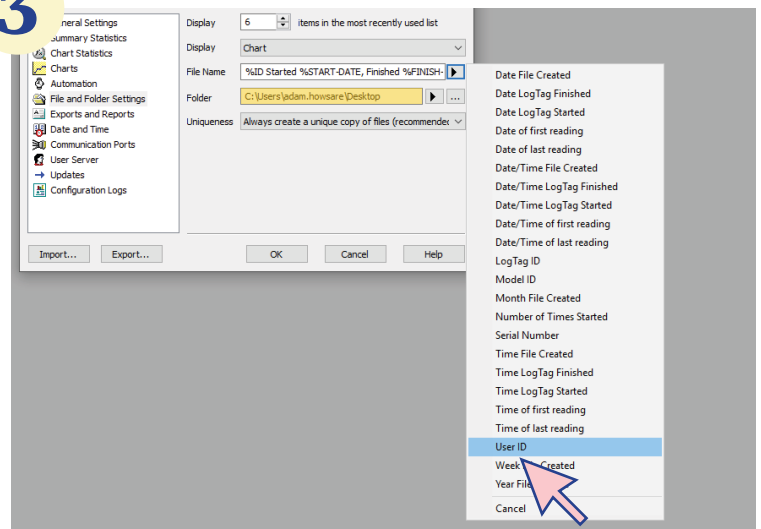
1



2



3

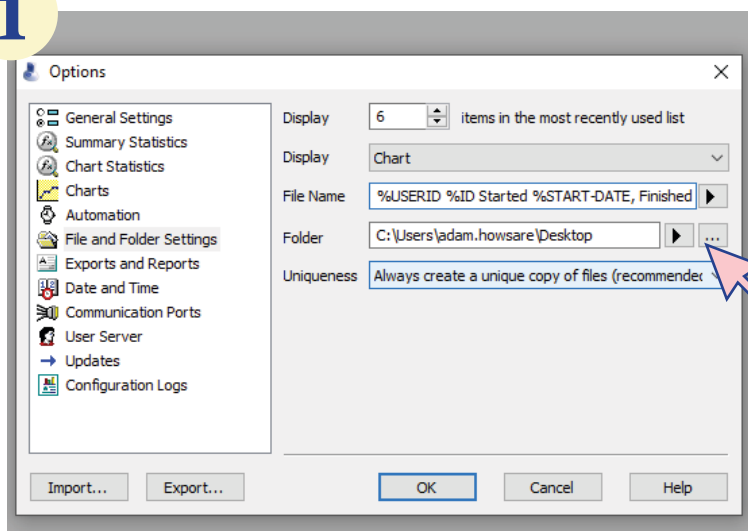


Step Five *Export Location*

1. Finally, we need to decide where to export the files to on your computer. Click on the **... button** to the right of the **Folder** field. A **Browse for Folder** window will appear.
2. Select **Desktop** and then click on **OK** at the bottom of the window.
3. Once the **Browse for Folder** window closes, click **OK** at the bottom of the Options window.

You've successfully set up your LogTag Analyzer software! Now, LogTag will automatically export the DDL's collected temperature data into a file onto your desktop.

1



2

